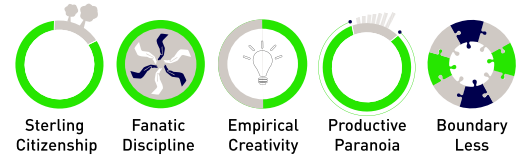


REAL SOLUTIONS, REAL SAVINGS REAL RELATIONSHIPS



KCG L



ABOUT EICL

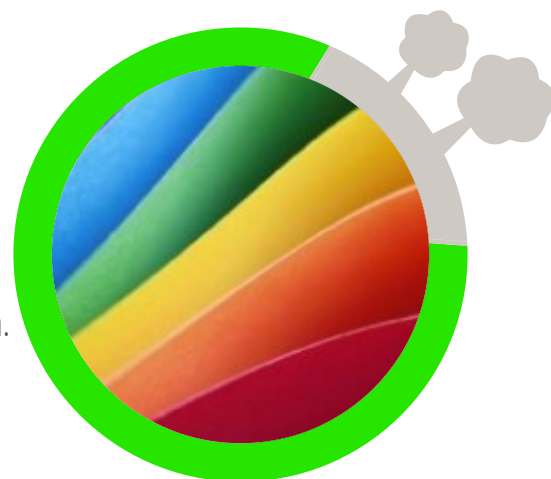
Every day, we earn the privilege of being a preferred solutions provider to extraordinarily successful customers. For over 75 years EICL has served such customers across a range of industries.

What started as a vertical integration solution for paper has since extended to Paint, Ink, Textiles, Pharmaceuticals & Food, Oil & Gas Drilling, Fibreglass, Rubber, etc. We are happy to connect the right raw material to the right application. .

**REAL SOLUTIONS, REAL SAVINGS
REAL RELATIONSHIPS**

KCG L

KCG L is refined medium particle size kaolin manufactured from specially selected raw clay under very close quality control. Available in lump form.



APPLICATION:

Recommended for use as a coating pigment in the manufacture of coated papers and as pre-coat in duplex boards.

| SPECIFICATION | | |
|--|---|----------|
| Brightness (ISO) | : | 84.0±0.5 |
| Yellowness | : | 4.5±1 |
| -2 micron w/w % (Min) | : | 75.0 |
| +300 mesh w/w % (Max) | : | 0.03 |
| Moisture w/w % (Max) | : | 12.0 |
| pH | : | 4.0-6.5 |
| Bulk density (Kg/Lit) | : | 1.0 |
| Caustic Demand, % (Max) | : | 0.15 |
| Dispersant Demand, % (Max) | : | 0.30 |
| Brookfield Viscosity, cp (Max) (70% solids, 100rpm, Spl.3) | : | 300 |
| Specific surface area m ² /g (BET) | : | 12.0 |
| TYPICAL ANALYSIS | | |
| Chemical (Mass %) | | |
| Al ₂ O ₃ | : | 38.0 |
| SiO ₂ | : | 45.0 |
| Fe ₂ O ₃ (Max) | : | 0.70 |
| Loss on Ignition | : | 14.5 |

Packing: Powder in 50 Kgs HDPE Bags